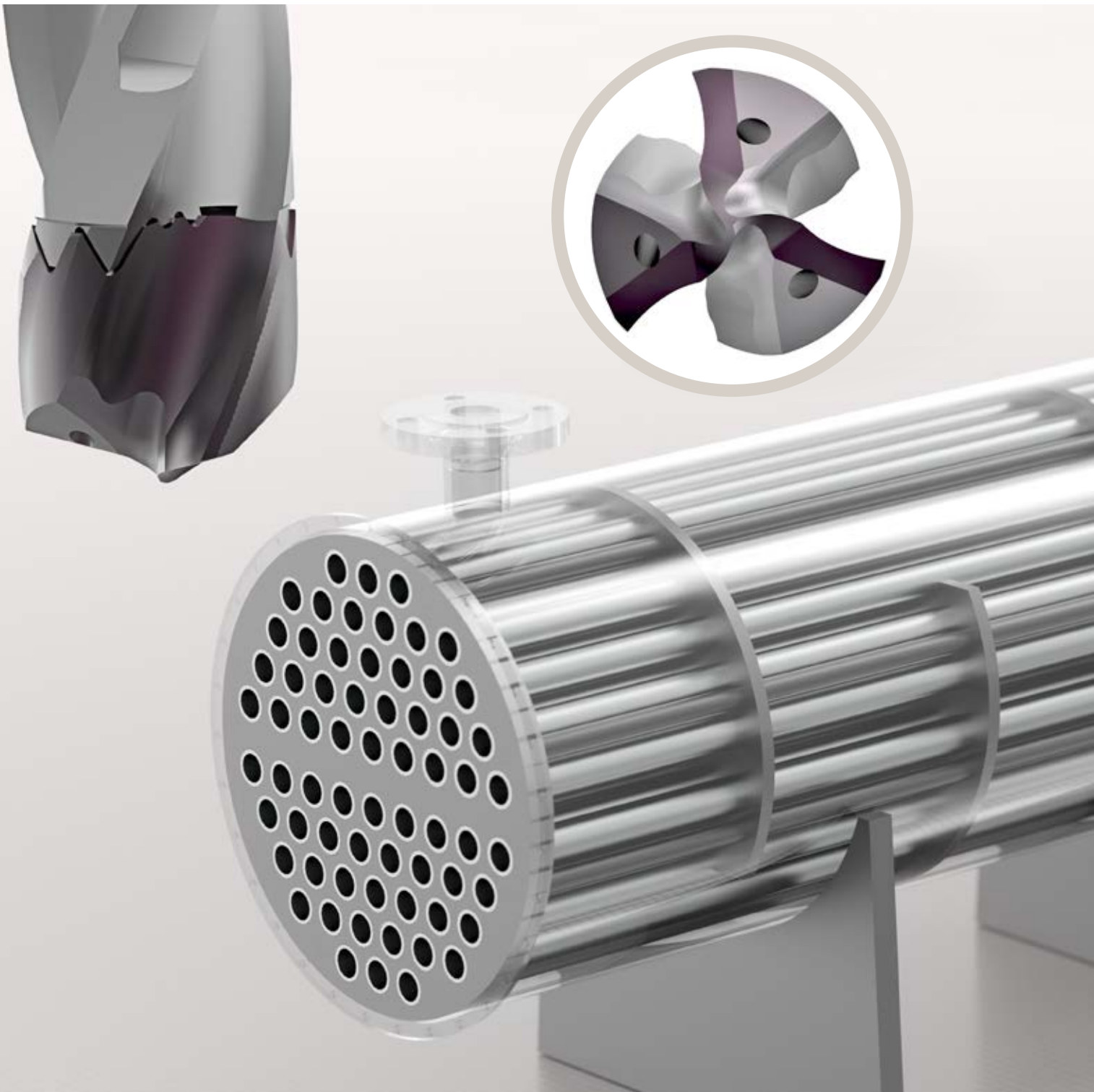




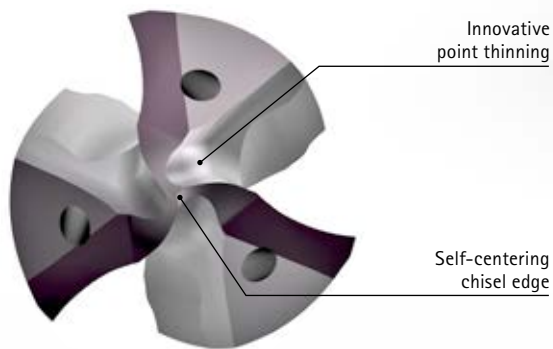
Your technology partner for cost-effective machining

SHELL AND TUBE HEAT EXCHANGER MACHINING



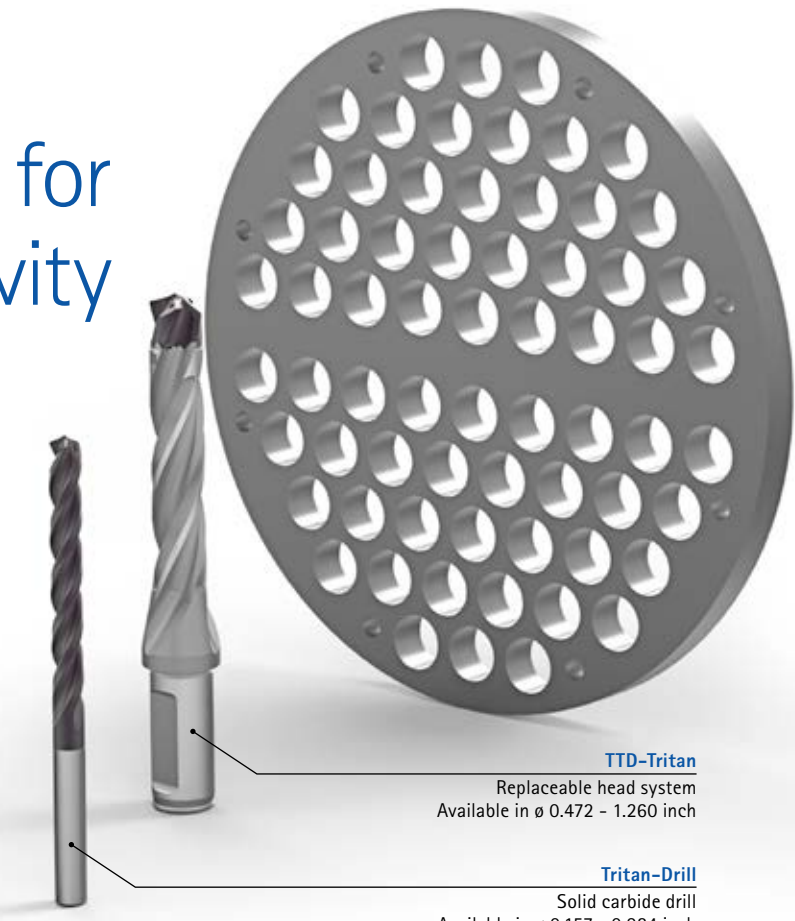
Three cutting edges for even more productivity

When drilling hundreds of holes in a carbon steel tube sheet, choosing the right drill is critical to success. With the new TTD-Tritan, MAPAL presents the first triple cutting edged replaceable head system, which is sure to impress through its dynamism, performance and precision – even under the most difficult drilling conditions. Fast and reliable chip removal is also achieved by the ground chip flutes and the shape of the main cutting edge that ensures short, tightly rolled chips.



Innovative point thinning

Self-centering chisel edge



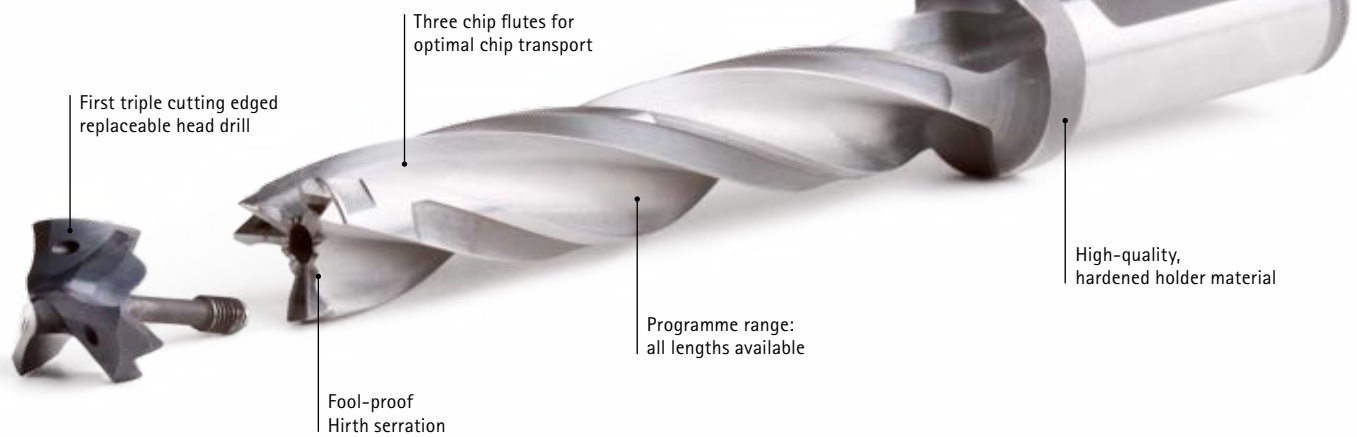
TTD-Tritan

Replaceable head system
Available in \varnothing 0.472 - 1.260 inch

Tritan-Drill

Solid carbide drill
Available in \varnothing 0.157 - 0.984 inch

Cylindrical shank with clamping flat ensures secure clamping and optimal force transmission



First triple cutting edged replaceable head drill

Three chip flutes for optimal chip transport

Fool-proof Hirth serration

Programme range: all lengths available

High-quality, hardened holder material

Highest performance with MAPAL chucks:



The MAPAL HighTorque Chuck (HTC) impresses due to high torque transmission and guarantees long tool lives. These hydraulic chucks are available from stock for different machine interfaces, e.g. HSK, SK, JIS-BT, CAT, etc.

AT A GLANCE

- \varnothing 0.157 - 1.260 inch
- Universal application (steel, cast iron)
- With internal cooling
- Innovative point thinning
- Self-centering chisel edge
- Maximum positioning accuracy

Watch our product video: [TTD-Tritan](#)

www.mapal.com/TTD-Tritan



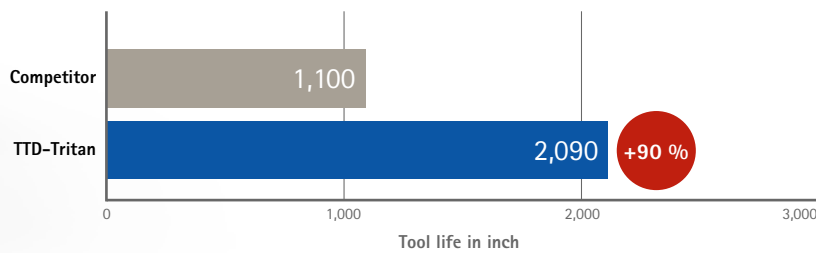
Practical test

Material: Carbon steel / SA-516-70N
 Machine: QuickMill Intimidator 120
 Spindle interface: CAT 50
 Diameter: 1.008" (25.6 mm)
 Hole depth: 2.5"

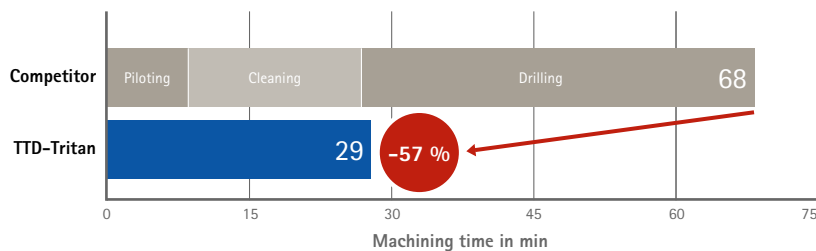
Cutting data	TTD-Tritan	Competitor product Two fluted exchangeable head system
v_c in ft/min	518	508
f_n in inch/rev.	0.028	0.018
v_f in inch/min	54.1	34

+59 %

Tool life

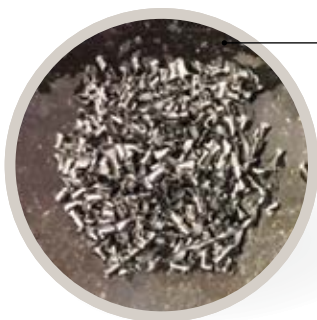


Machining time



Owing to the high feeds of the TTD-Tritan, the machining time has been significantly reduced. A mere **29 minutes** were required for these **550 bores** to be produced in the practical test.

Chip comparison



TTD-Tritan

- 100 % chip control
- Low cutting pressure
- Short, tightly rolled chips



Competitor

- Long, uncontrollable chip formation

KEY BENEFITS

Maximum performance

- 50 % - 100 % higher feed
Thanks to three cutting edges
- High process security
Fool-proof Hirth serration
- Excellent chip breaking
Innovative point thinning
- Maximum positioning accuracy
Self-centering chisel edge
- Low cutting pressure
Unique lead geometry
- Extremely economical
Replaceable head system



Discover tool and service solutions now that give you a lead:

REAMING | FINE BORING
DRILLING | BORING | COUNTERSINKING
MILLING
TURNING
CLAMPING
ACTUATING
SETTING | MEASURING | DISPENSING
SERVICES

www.mapal.com